



65 Sharpes Road Crabtree TAS

3  1  6 

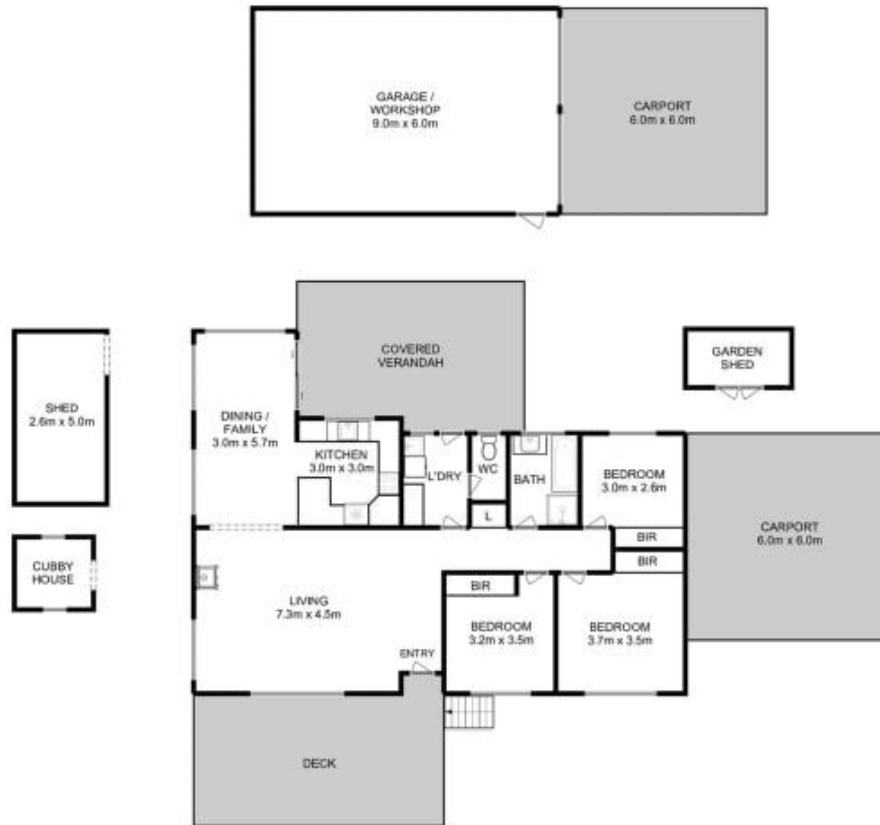
Nestled in a peaceful, rural locale, you are invited to view this beautifully renovated property. The gorgeous sandstone brick compliments the warmth of the home, and as you step inside, you will be captured by the sense of light and space the renovations have provided created with love by the current owners.

The open plan living is inviting, and the large open space lounge area is accompanied by a generous size deck, that allows you to look out over the natural ambience that surrounds the property. The kitchen flows through to the dining area where you can step outside onto the paved, semi enclosed BBQ area to enjoy time with family and friends and alfresco dine. There is availability in this zone to incorporate a second living area as well if required. The home is heated by a free-standing wood heater and a reverse cycle air conditioner ensuring comfort all year

Building Size : 121 sqm
Land Size : 5400 sqm
View : <https://www.taspr.com.au/7715350>



Renee Vanson
03 6264 2888



Total Approx. Floor Area : 124 sqm
 Total Approx. Outbuilding Area : 79 sqm

All measurements are internal and approximate.
 This plan is a sketch for illustration, not valuation.
 Produced by Open²view.com

